

Research programme at Anses

National Programme « Occupational and environmental health and safety »

Louis LAURENT
Head of Research and Science Watch Unit

Programme officer : Laetitia DUBOIS
Scientific meetings : Paulina CERVANTES

Missions

ANSES contributes to ensuring:

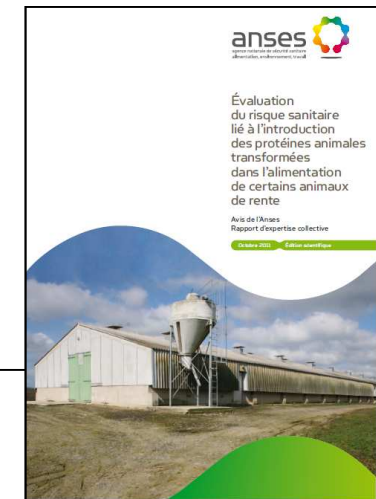
- human health and safety in the fields of environment, work and food

As well as:

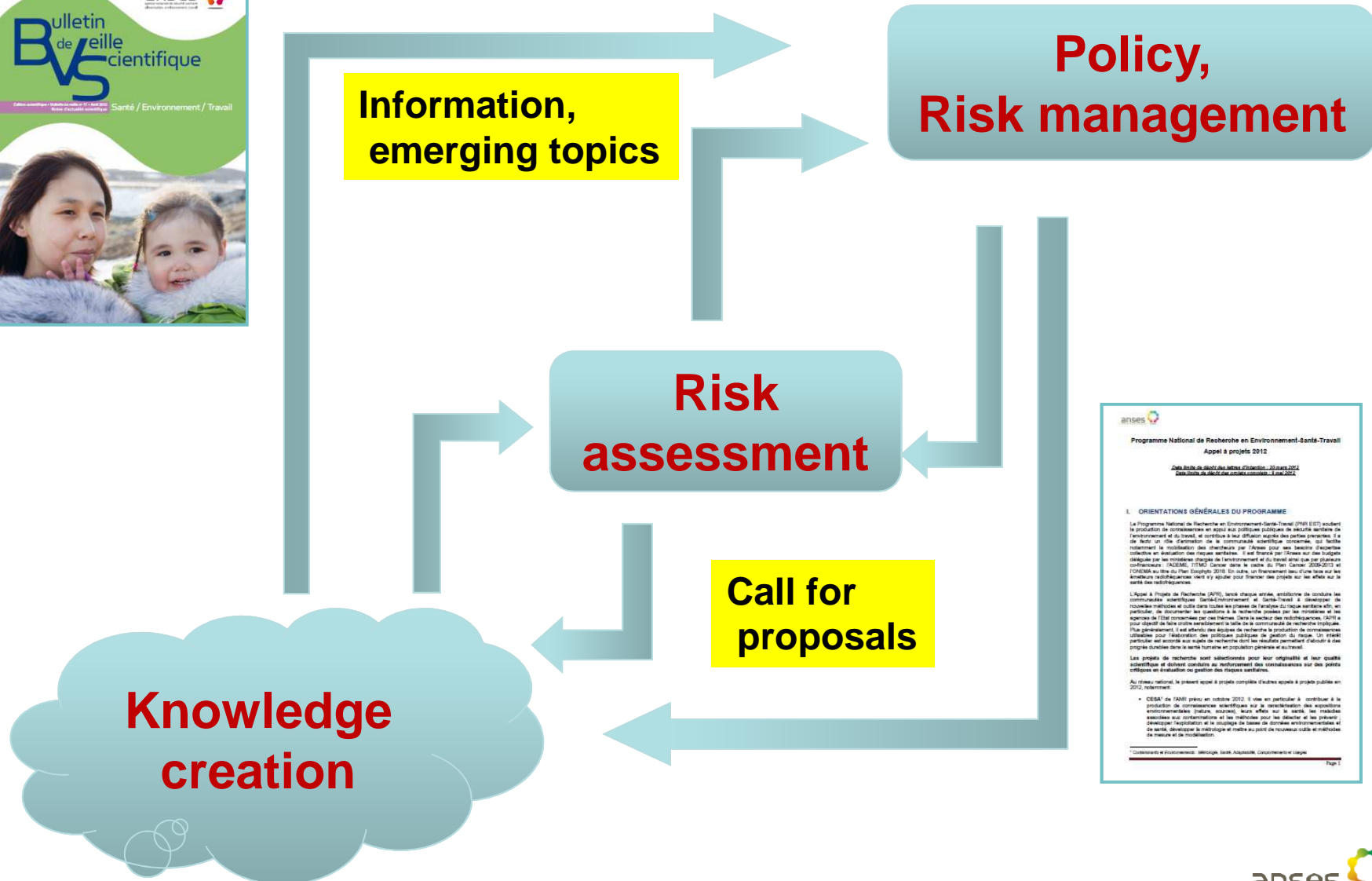
- protecting animal health and welfare
- protecting plant health

About 1340 staff including:

- **Risk assessment: 28 %**
- **Research and reference activity: 59%**
- **Others: 13%**



From knowledge creation to risk management



Collective expertise: Risk and radiofrequency

- Risk evaluation from existing data periodically updated : 2003, 2005 and 2009
- Analysis of literature (for instance 228 articles related to biological effects for $f > 400$ MHz) including
 - Analysis of methodology
 - Reproducibility of results
 - A specific section for EHS



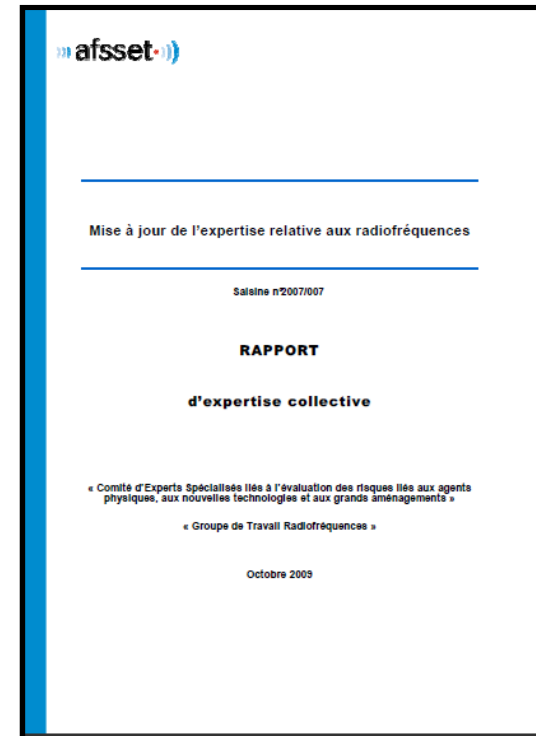
Actualité

Du 1er décembre 2010 au 21 février 2011
Appel à candidatures d'experts scientifiques pour la constitution d'un groupe de travail (GT) «Radiofréquences et santé».

L'Anses lance un appel à candidatures d'experts scientifiques afin de procéder à la constitution d'un groupe de travail « Radiofréquences et santé ».

Le rythme de publications sur le sujet toujours élevé, l'existence de travaux de recherche importants sur les mécanismes d'interactions avec le corps et les effets biologiques des radiofréquences, mais aussi l'évolution des technologies de communication sans fil et la

- In 2011, Anses set a working group to update risk evaluation. The report expected in 2013.



PNR EST: Goals and specificity

Funding: (presently 5-6 M€/an)

- Ministry for **ecology and sustainable development and ministry for labour**
- Ministry for **agriculture** (antimicrobial resistance)
- Ademe (since 2009), Inca → ITMO-cancer (since 2010)
- ONEMA (Pesticides)
- **Tax on radiofrequency emitters (since 2011)**

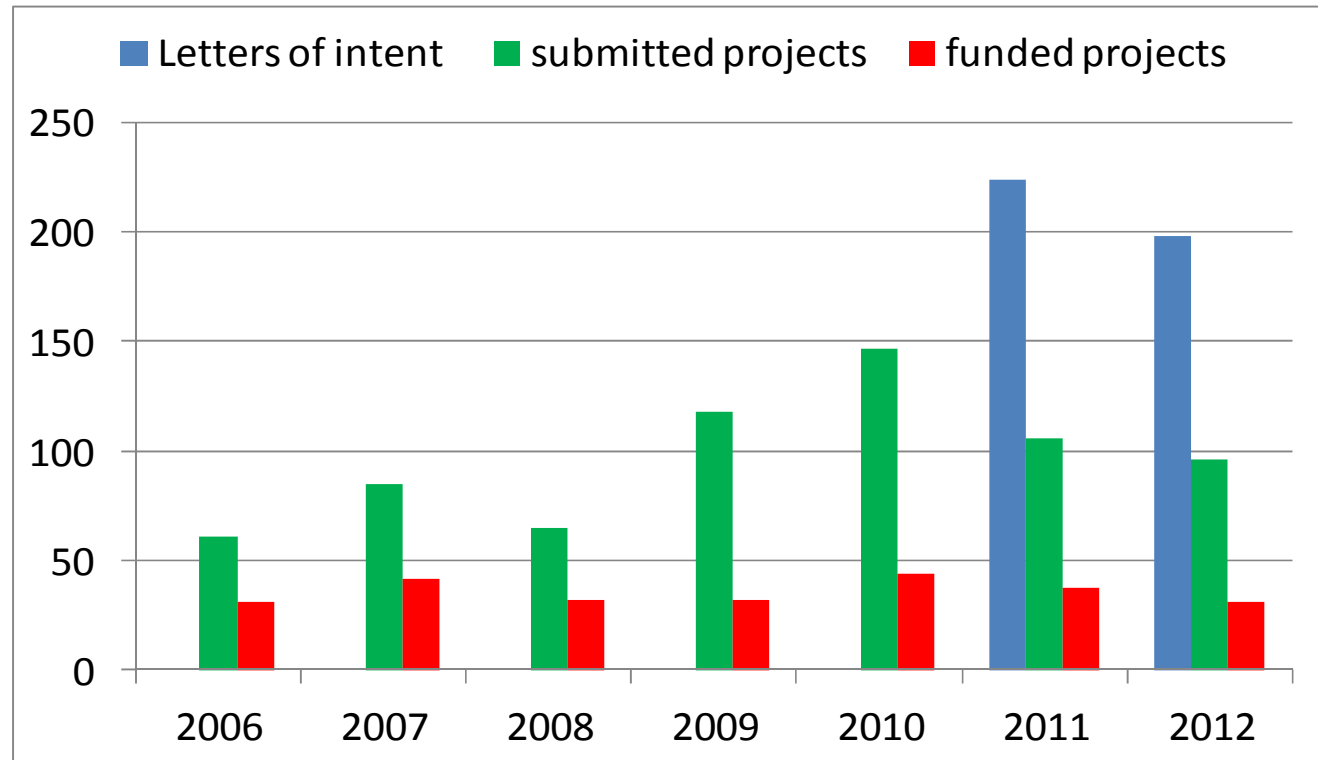
Specificities:

- Reinforce links between research and expertise (open to foreign teams)
- Knowledge production in relation with risk assessment
- Close to policy makers (« questions to research

Project selection

- Two stages (letter of intent and full project)
- Project selection by scientific committee /reviewers and steering committee

PNR EST National Programme for Research: Environment /Health/ Work



247 FUNDED PROJECT SINCE 2006

- **Chemicals : 28 %**
- **Biological agents :18 %**
- **Nanomatériaux : 10 %**
- **Radiofréquences : 5 % (since 2011)**

ADEME



Agence de l'Environnement
et de la Maîtrise de l'Énergie



aviesan

alliance nationale
pour les sciences de la vie et de la santé



ONEMA
Office national de l'eau
et des milieux aquatiques

All projects

- 198 letters of intent
- 100 selected for full projects → 96 submitted
 - 10 feasibility studies (average 41 k€)
 - 85 project (average 195 k€) plus one large project à 3,8 M€
- 54 ranked A (excellent) or B (good) by the scientific committee
- 31 projects selected for funding (5,8 M€)

RF

- 22 letters of intent
- 14 selected for full projects → 14 submitted
- 9 ranked A (excellent) or B (good) by the scientific committee
- 6 projects selected for funding (1,7 M€)

PNR EST: Topics

	2011	2012
In vitro and in vivo studies	EPSI 3.5 ReproRF	MARFEM OMCell INFLAREF
New approaches to investigate EHS	HSEM sensi	none
Epidemiological studies	Feasibility of Cosmos	<i>RFExpo-ELFE</i>
Metrology	none	none
Characterization of exposures	DICER Mobi-Expo	ACTe <i>EXPO@LYON</i>
Humanities and social sciences	none	none

Link with stakeholders : dialogue committees (RF and nano)

2009 working group report page 17:

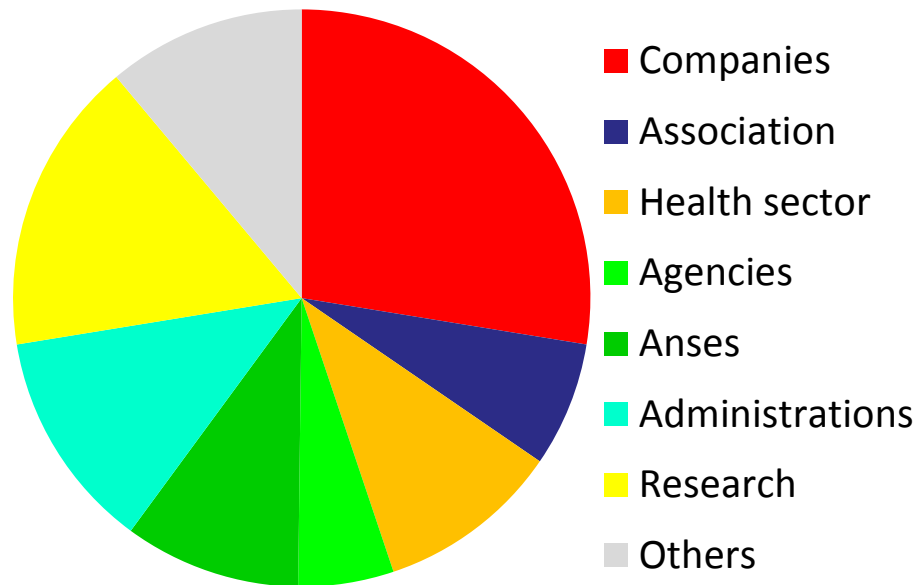
“However the public controversy over radio frequencies cannot be reduced to a gap between scientific risk assessment and a "perceived risk", which is in turn measured by opinion polls. It involves different groups of actors who all mobilize arguments scientific, ethical and economic”

- **Aim:** Thinking, exchange of views and information about potential effects of radiofrequencies . Useful for PNR EST call, working group.
- **About 30 people**
 - 9 from associations , 5 from mobile phone operators and broadcasters
 - 5 scientists from working group, 10 from Anses
- **Three meetings/year.** Discussion mainly about Anses actions :
 - Call
 - Expertise at Anses
 - Others

Link with stakeholders : Meeting for dissemination of project result

Twice a year special day to discuss results of funded projects

- 30 May 2012: From exposure indicator to biomarkers
- **25 September 2012: Radiofrequencies**
- 10-11 December 2012: Endocrine disruptors (MEDDE/ANSES)
- 16 April 2013:



243 registered people at RF meeting

Some comments about research on RF

- Not all questions can be dealt with using competitive calls
 - Need for other tools (specific contracts)
- Small size community
- Trust (for risk related to new technologies)
 - Risk related to technology and “independent research teams “
 - **Fostering projects mixing various types of partners**
 - Weight of methodology

2009 working group report page 17:

“..., the treatment of public controversy can hardly be reduced to the improvement of information [of layman] , but it implies procedures for consultation and research combining the plurality of stakeholders and which may trigger mechanisms for mutual learning”

Conclusion

- **Various activities at Anses**

- Dialogue committee
- Call for projects
- Expertise (specific working group)

- **Specificities of the scientific domain**

- Small community
- The question of trust (similar to a few other domains)
- Attempts to foster new type of projects involving stakeholders

- **The 2013 PNR EST call is open**

(deadline for letters of intent 30 January 2013)